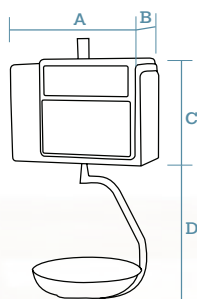


1 LABEL PRINTER (OR RECEIPT)

S. Steel Hanging Format



Dimensions



DATA IN mm

A 405

B 70

C 285

D 415

Plate (stainless steel): Ø 310 mm



Cassette included.



	Displays	Printer	PLUs	Direct PLUs	Vendors	Power	Capacity / Accuracy	Reference
M-515 H S. Steel	LCD Segment	Labels (or Receipts)	2,000	45x2 + 4x2*	5	Mains	6 kg / 2 g - 15 kg / 5 g	7M151C2SIE__
M-525 H S. Steel	LCD Segment	Labels (or Receipts)	5,000	70x2 + 9x2*	10	Mains	6 kg / 2 g - 15 kg / 5 g	7M251C2SIE__

* Using the Shift key and those of Vendor.



1 PRINTER
RECEIPTS
OR LABELS



LCD SEGMENT
DISPLAY



OPTIONAL
LCD GRAPHIC
DISPLAY



UP TO
5,000 PLUs



UP TO
10 VENDORS



ETHERNET
TCP/IP



WI-FI
OPTIONAL



OPTIONAL
RECHARGEABLE
INTERNAL
BATTERY



METROLOGICAL
VERIFICATION
OPTIONAL (EU)

Characteristics and functionality

Main characteristics

- Electronic scale with higher visibility display options.
- Models with receipt printer or label printer (suitable for receipts).
- Variety of formats.
- Functional and robust design.
- Compliance with EU Regulation 1169/2011 on the provision of food information to consumers (only for M-525).

Features

- Extensive information for each PLU: normal price, price for weight scales and by kg/100 g (in M-520, M-520 B and M-525), 2 names of 20 characters (1 in M-510, M-510 B and M-515), 10 free texts of 24 characters (5 in M-510, M-510 B and M-515), 1 text of 3,000 characters (in M-525), etc.
- PLU search by code or name.
- Preset keys to programming menus: to change prices, register PLUs or vendors, etc.
- Direct access to 999 PLUs from the keyboard.
- Drill down menus.

- Printing of scale menus.
- 2 programmable macros (in M-520, M-520 B and M-525): recording of a sequence of keys to create direct access to any task (reopening of receipts, lists, change in batcher number, etc.).
- Sales and management reports: sales (by article, vendor, time frames, last month, etc.), balance available in the cash drawer, modified PLUs, etc.
- Fast and reliable communication between scales, with PC and mobile devices (via DWS).
- Stocks management on the scale.
- Option to record normal price for each article.
- Stock / order mode.

Capacity / Accuracy

- Multirange (3,000 divisions): 6 kg / 2 g - 15 kg / 5 g.
- Optional:
 - › Monorange (3,000 divisions): 15 kg / 5 g or 30 kg / 10 g.
 - › Multirange (3,000 divisions): 15 kg / 5 g - 30 kg / 10 g.
 - › Monorange (6,000 divisions): 12 kg / 2 g or 30 kg / 5 g.

Available formats

- Flat.
- Pole.
- Double body.
- Hanging (ABS or stainless steel).
- Self-service.

Construction

- Highly resistant ABS plastic casing in counter and hanging formats.
- Stainless steel casing in hanging format.
- Stainless steel plate.
- Access to all non-metrological components without the need to unseal the scale.

Displays

- Backlit LCD segment display (W150.2 X H43.4 mm) for vendor and buyer (showing weight, price / kg, total, tare, vendor and name of articles).
- **Optional:**
 - › LCD matrix graphic display (W134 x H41 mm) for vendor and buyer, for M-520, M-520 B and M-525. Possibility of showing: logos, profitability codes, warning messages sent from a PC (on vendor display) and advertising messages with animated effects on buyer display.

Printer

- Models available with 1 printer for receipts or 1 printer for labels (also suitable for receipts by changing the paper roll and the working mode).
- 54 mm thermal printer.
- High resolution (8 dots/mm).
- **Speed depending on models:**
 - › M-520 and M-525: 100 mm/sec.
 - › M-510 and M-515: 80 mm/sec.
 - › M-510 B and M-520 B: 60 mm/sec.
- **Cassette for immediate paper roll change** (in label printers).
- **Optional:**
 - › Linerless (in M-525).

Receipts

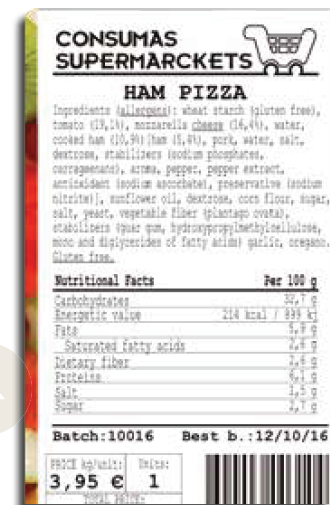
- **All the models:**
 - › 15 fonts (6 monospaced + 9 multispaced: more modern and legible).
 - › Up to 40 items.
 - › EAN-13 barcode.
 - › 9 payment methods.
 - › Total in National currency and another 3 different currencies.
 - › Discounts per line and total.

- **M-510, M-510 B and M-515:**
 - › 2 fixed formats.
- **M-520, M-520 B and M-525:**
 - › 2 fixed formats + 1 programmable format.
 - › 4 logos per receipt.
 - › Name of vendor.
 - › Customers on account.



Labels

- **All the models:**
 - › 15 fonts (6 monospaced + 9 multispaced: more modern and legible).
 - › 40 logos.
 - › EAN-13 barcode.
 - › 40 fields of information.
 - › 100 programmable texts.
 - › Manual and automatic pre-packing modes.
 - › Automatic adjustment of the paper detection option.
- **M-515:**
 - › From W30 x L30 mm to W60 x L80 mm.
 - › 20 fixed formats + 5 programmable formats.
 - › 1 type of generic traceability (for meat, fish, fruits, vegetables, etc.) up to 10 products. Included in the prevailing European legislation on bovine traceability.
- **M-525:**
 - › From W30 x L30 mm to W60 x L100 mm.
 - › 20 fixed formats + 10 programmable formats.
 - › 3 levels of totals.
 - › Printing of "n" identical labels.
 - › Printing with 90°, 180° and 270° rotation.
 - › Packaging date, expiry date and extra date (for any application).
 - › Alphanumeric batch number.
 - › 2 types of generic traceability (for meat, fish, fruits, vegetables, etc.) up to 20 products. Included in the prevailing European legislation on bovine traceability.



Food information

- **M-510, M-510 B and M-515:**
 - › Minimum letter size: 1.2 mm.
 - › For direct sale receipts and labels: possibility of indicating in the PLU name (with an * or other symbol) those that contain allergens and programming a text, such as “* Consult allergens”.
 - › Labels do not comply with the labelling packed food Regulation (only 5 texts of 24 characters are available).
- **M-520 and M-525:**
 - › Minimum letter size: 1.2 mm.
 - › Effect (**bold**, underlined, or **both**) for each character in the text.
 - › Possibility of using the general text “G” (3,000 characters) for ingredients, in lower case or UPPER CASE to highlight allergens.
 - › Possibility of including a table of nutritional facts.
 - › Free texts (10 x 24 characters).
 - › For direct sale receipts and labels: possibility of indicating in the PLU name (with an * or other symbol) those that contain allergens and programming a text, such as “* Consult allergens”.
 - › Possibility of printing 2 labels for each operation: programmable by PLU, configurable information, 2nd automatic or manual label (also to be used as promotional labels).
- **M-525:** Compliance with EU Regulation 1169/2011 on the provision of food information to consumers as of 13 December 2016.

Communications

- TCP/IP Ethernet for interconnection and connection to PC.
- RS-232, for connection to scanner (in M-520 and M-525).
- **Optional:**
 - › Wi-Fi.

Security

- Access to different protected programming menus via configurable passwords.

Interconnection

- **M-510, M-510 B and M-515:** up to 5 scales per section.
- **M-520, M-520 B and M-525:** up to 10 scales per section.

Connectivity with other devices

- PC.
- **Barcode scanner** (powered by the scale – 5 VDC) to read EAN-13 bar codes (in M-520, M-520 B and M-525).
- **Cash drawer.**
- **Queueing system** (for hanging scales).

Software

(See section on software)

PC software:

- **DFS:**
 - › Programming of scales.
 - › Receipt of sales data.
 - › Data backup copy.
 - › Graphic design of receipts and labels.
 - › Design and management of advertising images for graphic display.
- **RMS*:**
 - › Programming and management of scales.
 - * Does not manage:
 - › Images (of articles and advertising).
 - › Specific functions of Mistral scales.
- **DLD:**
 - › Graphic design of receipts and labels.
- **Integration tools: in Windows or Linux to facilitate communication with the Back-Office.**

Scale firmware:

- **DWS (Dibal Web Server):**
 - › Allows access to the information on each scale from any computer or mobile device with an Internet browser.

Power supply

- **Mains: 110 up to 230 VDC.**
- **Depending on the models, also:**
 - › High performance rechargeable internal battery (M-510 B and M-520 B): up to 36 hours of life (calculated for 1,000 receipts, with 3 articles per receipt)** and connector to external battery 12 V.
 - › **Optional:** Anti-blackout rechargeable internal battery 24 V and connector to external battery 24 V.

** With segment display and back lighting disconnected. The charging and autonomy times may vary considerably in accordance with the temperature, age and condition of the batteries, use of back lighting, frequency of use of the printer, interconnection, etc.

Accessories



Ref: BCR73

Small Italian plate

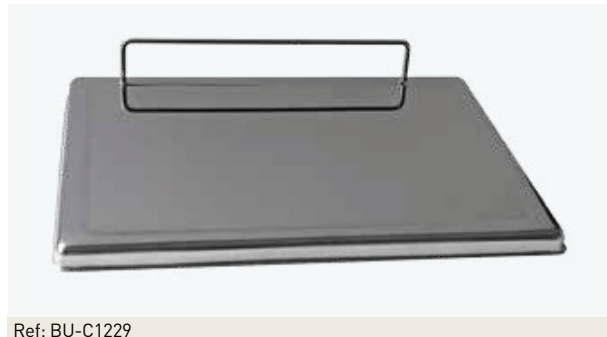
L357 x W235 x H55 mm.



Ref: BCR74

Large Italian plate

L407 x W284 x H60 mm.



Ref: BU-C1229

Flat plate for hanging scales

L360 x W280 mm, instead of the semi deep plate.



Ref: BC-C039

Deep plate for hanging scales

Ø310 x H70 mm, instead of the semi deep plate.



Ref: BHN99

Interconnection switch

For M-510 B and M-520 B scales with rechargeable internal battery.



Ref: BHN85

Battery for the switch

Power battery for the BHN99 interconnection switch.