

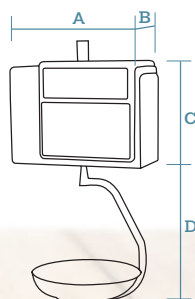
1 LABEL PRINTER (OR RECEIPT)

S. Steel Hanging Format



SCALES WITH PRINTER

Dimensions



Cassette included.

DATA IN mm

A	405
B	70
C	285
D	415

Plate (stainless steel): Ø 310 mm



	Displays	Printer	PLUs	Direct PLUs	Vendors	Power	Capacity / Accuracy	Reference
S-545 H S. Steel	LCD Segment	Labels (or Receipts)	10,000	60x2 + 19x2*	20	Mains	6 kg / 2 g - 15 kg / 5 g	7S451C5SIE__

* Using the Shift key and those of Vendor.



1 or 2 PRINTERS
RECEIPTS, LABELS OR
RECEIPTS+LABELS



LCD SEGMENT
DISPLAY
(EXCEPT STAR COLOUR)



OPTIONAL LCD GRAPHIC
DISPLAY
(EXCEPT STAR COLOUR)



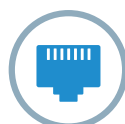
DUAL 7" TFT DISPLAY
(IN STAR COLOUR)



UP TO 10,000 PLUs



UP TO 20 VENDORS



ETHERNET TCP/IP



USB



WI-FI
OPTIONAL



OPTIONAL RECHARGEABLE INTERNAL BATTERY
(EXCEPT STAR COLOUR)



METROLOGICAL VERIFICATION
OPTIONAL (EU)

Characteristics and functionality

Main characteristics

- Electronic scale with higher visibility display options.
- Models with receipt printer, label printer (suitable for receipts) or two printers (for receipts and labels).
- Variety of formats.
- Functional and robust design.
- Greater capacity (memory, functions, communications and interconnections).
- High speed and high resolution printers.
- Compliance with EU Regulation 1169/2011 on the provision of food information to consumers.

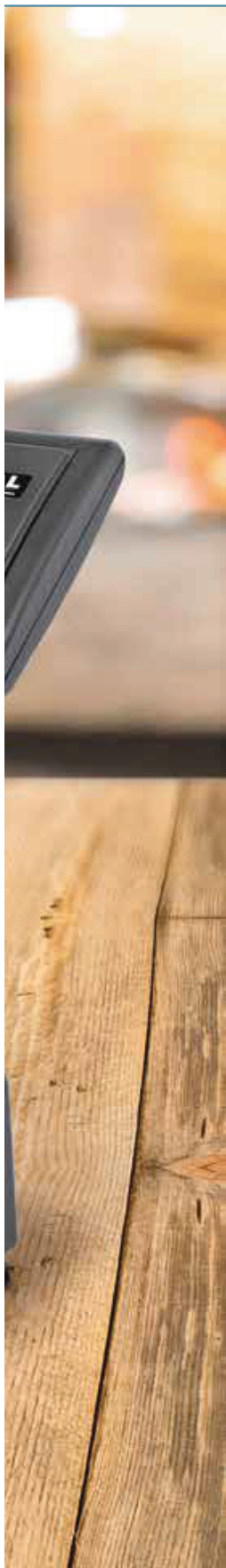
Features

- Extensive information for each PLU: normal price and offer price, price for weight scales and by kg/100 g, 3 names of 20 characters or 2 names of 30 characters, 20 free texts of 24 characters, 1 text of 3,072 characters (in S-545 and S-547), etc.
- PLU search by code or name.
- Preset keys to programming menus: to change prices, register PLUs or vendors, etc.
- Direct access to 999 PLUs from the keyboard.
- Drill down menus.
- Printing of the scale menus.

- Programmable macros: recording of a sequence of keys to create direct access to any task (reopening of receipt, lists, change in batch number, etc.). Depending on the model, the Star Series scales have macros and preset PLU keys, in addition to 10 specific macro keys.
- Sales and management reports: sales (by article, vendor, time frames, last month, etc.), margins, balance available in the cash drawer, modified PLUs, etc.
- Fast and reliable communication between scales, with PC and mobile devices (via DWS).
- Stocks management on the scale.
- Option to record normal price and offer price for each article.
- Stock / order mode.

Capacity / Accuracy

- Multirange (3,000 divisions): 6 kg / 2 g - 15 kg / 5 g.
- Optional:
 - > Monorange (3,000 divisions): 15 kg / 5 g or 30 kg / 10 g.
 - > Multirange (3,000 divisions): 15 kg / 5 g - 30 kg / 10 g.
 - > Monorange (6,000 divisions): 12 kg / 2 g or 30 kg / 5 g.



Available formats

- Flat (except Star Colour).
- Pole.
- Double body.
- Hanging (ABS or stainless steel).
- Self-service (except Star Colour).

Construction

- Highly resistant ABS plastic casing in counter and hanging formats.
- Stainless steel casing in hanging format.
- Stainless steel plate.
- Access to all non-metrological components without the need to unseal the scale.

Displays

- Backlit LCD segment display (W150.2 x H43.4 mm) for vendor and buyer (showing weight, price/ kg, total, tare, vendors and name of article).
- Optional:
 - › LCD matrix graphic display (W134 x H41 mm or W188 x H55 mm) for vendor and buyer. Possibility of showing: logos, profitability codes, warning messages sent from a PC (on vendor display) and advertising messages with animated effects on buyer display.
- STAR Colour Models:
 - › 7" TFT display for vendor and buyer (shows advertising and promotional images even during sales operations).

Printer(s)

- Models available with 1 printer for receipts, 1 printer for labels (also suitable for receipts by changing the paper roll and the working mode) or 2 printers (for receipts and for labels).
- 54 mm thermal printer.
- High resolution (8 dots/mm) and speed (100 mm/sec).
- Cassette for immediate paper roll change (in label printers).
- Optional:
 - › Linerless (in label printers).

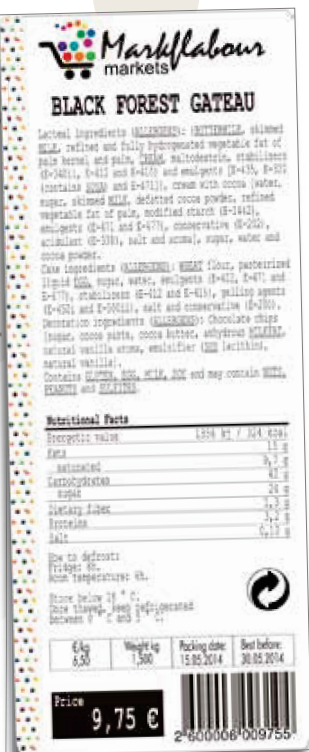
Receipts

- 15 fonts (6 monospaced + 9 multispaced: more modern and legible).
- Up to 75 items.
- 2 fixed formats + 2 programmable formats.
- 4 logos per receipt.
- Barcodes: EAN-13, EAN-128 and Code 128.
- Name of vendor.
- 9 payment methods.
- Total in National currency and another 3 currencies.
- Discounts per line and total.

- Loyalty points.
- Customers on account.
- Recipes.

Labels

- 15 fonts (6 monospaced + 9 multispaced: more modern and legible).
- From W30 x L30 mm to W60 x L150 mm.
- 20 fixed formats + 40 programmable formats.
- 100 logos.
- Barcodes: EAN-13, EAN-128 and Code 128.
- 60 fields of information.
- 100 programmable texts.
- Manual and automatic pre-packing modes.
- 3 levels of totals.
- Printing of "n" identical labels.
- Printing with 90°, 180° and 270° rotation.
- Automatic adjustment of the paper detection option.
- Packaging date, expiry date and extra date (for any application).
- Alphanumeric batch number.
- 10 types of generic traceability (for meat, fish, fruit, vegetables, etc.) up to 99 products. Included in the prevailing European legislation on bovine traceability.



Food information

- Compliance with EU Regulation 1169/2011 on the provision of food information to consumers as of 13 December 2016:
 - › Minimum letter size: 1.2 mm.
 - › Effect (**bold**, underlined or **both**) for each character in the text.
 - › Possibility of using the general text "G" (3,000 characters) for ingredients, in lower case or UPPER CASE to highlight allergens.
 - › Possibility of including a table of nutritional facts.
 - › Free texts (20 x 24 characters).
 - › For direct sale receipts and labels: possibility of indicating in the PLU name (with an * or other symbol) those that contain allergens and programming a text, such as "* Consult allergens".
 - › Possibility of printing 2 labels for each operation: programmable by PLU, configurable information, 2nd automatic or manual label (also to be used as promotional labels).

Communications

- TCP/IP Ethernet for interconnection and connection to PC.
- RS-232, for connection to scanner.
- USB
- Optional:
 - › Wi-Fi.

Security

- Access to different protected programming menus via configurable passwords.

Interconnection

- Up to 16 scales per section.

Connectivity with other devices

- PC.
- Barcode scanner (powered by the scale - 5 VDC) to read EAN-13 and EAN-128 barcodes.
- Cash drawer.
- Queueing system (for hanging scales).

Software

(See section on software)

PC Software:

- DFS:
 - › Programming of scales.
 - › Receipt of sales data.
 - › Data backup copy.
 - › Graphic design of receipts and labels.
 - › Design and management of advertising images for graphic display and colour TFT.
- RMS*:
 - › Programming and management of scales.
 - * Does not manage:
 - › Images (of articles and advertising).
 - › Specific functions of Star scales.
- DLD:
 - › Graphic design of receipts and labels.
- Integration tools: in Windows or Linux to facilitate communication with the Back-Office.

Scale firmware:

- DWS (Dibal Web Server):
 - › Allows access to the information on each scale from any computer or mobile device with an Internet browser.

Power supply

- Mains: 110 up to 230 VDC.
- Optional:
 - › High performance rechargeable internal battery (S-540 B DB) –except for STAR Colour–: up to 52 hours of life (calculated for 1,500 receipts, with 3 articles per receipt)** and connector to external battery 12 V.
 - › Anti-blackout rechargeable internal battery 24 V and connector to external battery 24 V.

** With segment display and back lighting disconnected. The charging and autonomy times may vary considerably in accordance with the temperature, age and condition of the batteries, use of back lighting, frequency of use of the printer, interconnection, etc.

Accessories



Ref: BCR73

Small Italian plate

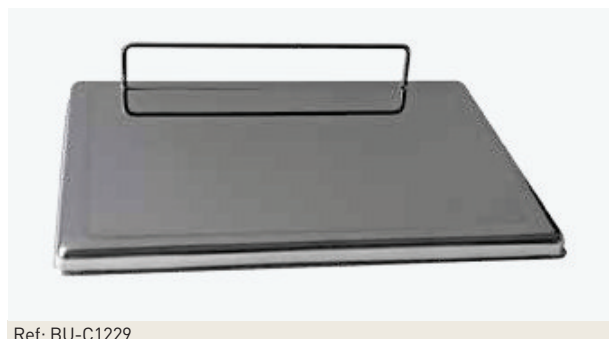
L357 x W235 x H55 mm.



Ref: BCR74

Large Italian plate

L407 x W284 x H60 mm.



Ref: BU-C1229

Flat plate for hanging scales

L360 x W280 mm, instead of the semi deep plate.



Ref: BC-C039

Deep plate for hanging scales

Ø310 x H70 mm, instead of the semi deep plate.



Ref: BHN99

Interconnection switch

For S-540 B DB scales with rechargeable internal battery.



Ref: BHN85

Battery for the switch

Power battery for the BHN99 interconnection switch.