



GP-2833 3 inch Thermal Barcode Printer

Each label takes about 0.14 seconds

About 25,000 labels per hour

Printing speed comparison



200 MM/s

Fast printing speed, super smooth and no paper jams
Outstanding speed for barcode printers



200mm/s
Printing speed



Front paper
feeding design



Durable
print head



Label/
Waybill printing



Back-in
paper design

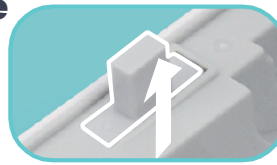


Cost saving, no waste the first label

Automatic paper detection
 First label always being calibrated
 Fast paper size detection and positioning
 (Support label rollback over 60mm)

Opening and closing the cover feels good, not easy to break and damage

User friendly open cover pin design
 Open and close the cover cushioning,
 anti-pinch hand, Giving better user experience

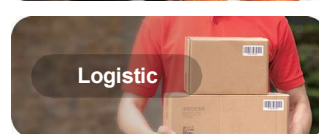
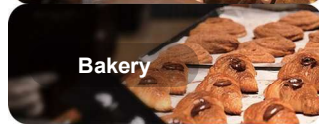
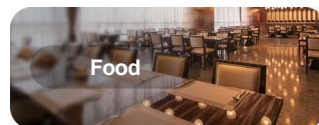
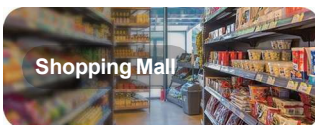


Visualization window

Real-time knows printing status and
 usage of paper consumables

Product Specifications

Multi-industry applicable scenarios, Compatible with common software on the market



| | |
|---------------------|-------------------------------|
| Printing method | Direct Thermal |
| Print resolution | 203DPI |
| Printing Speed | 50-200mm/s |
| Printing Width | 80mm |
| Interface | USB |
| Paper loading width | 30-82mm with backing paper |
| Media roll OD | 100mm |
| Working Environment | 5~45°C (41~113°F) , 20~90% RH |
| Storage Environment | -25~55°C , 20~93%RH |
| Product dimensions | 188mm×143mm×140 mm (DxWxH) |
| Package dimensions | 260mm×210mm×230 mm (DxWxH) |
| Net Weight | 1.2kg |



Zhuhai GPOS Label Printer Co., Ltd.

No. 168, Yile Road, Pingsha Town, Zhuhai,
 Guangdong, China

Customer Service: 400-038-0088

* The printer image is indicative only, if there is inconsistency between the image and the actual product, the actual product shall govern.