

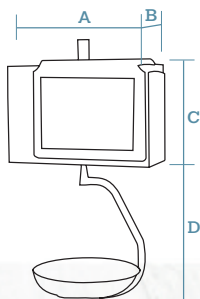
1 LABEL PRINTER (OR RECEIPT)

S. Steel Hanging Format



SCALES WITH PRINTER

Dimensions



Cassette included.

DATA IN mm

A	405
B	70
C	315
D	415

Plate (stainless steel): Ø 310 mm

	Vendor Display	Buyer Display	Printer	PLUs	Direct PLUs	Vendors	Power	Capacity / Accuracy	Reference
D-955 H 12+7	12.1" touch screen TFT	7" TFT	Labels (or Receipts)	10,000	999	20	Mains	6 kg / 2 g - 15 kg / 5 g	7D755C5SIE__
D-955 H 12+12	12.1" touch screen TFT	12.1" TFT	Labels (or Receipts)	10,000	999	20	Mains	6 kg / 2 g - 15 kg / 5 g	7D756C5SIE__



1 or 2 PRINTERS
RECEIPTS, LABELS OR
RECEIPTS+LABELS



**TOUCH SCREEN
TFT**



**UP TO
10,000 PLUs**



**UP TO
20 VENDORS**



**ETHERNET
TCP/IP**



USB



**WI-FI
OPTIONAL**



**METROLOGICAL
VERIFICATION
OPTIONAL (EU)**

Characteristics and functionality

Main characteristics

- Touch screen scale with traditional electronics (no PC).
- Models with receipt printer, label printer (suitable for receipts) or with 2 printers (for receipts and labels).
- Variety of formats.
- Modern, compact and easy to clean design.
- More intuitive user menus.
- More dynamic and stylish buyer screen as an advertising tool.
- Configurable and customized flat vendor screen.
- High speed and resolution printer.
- Compliance with UE Regulation 1169/2011 on the provision of food information to consumers.

Features

- Extensive information for each PLU: normal price and offer price, price for weight scales and by kg/100 g, 3 names of 20 characters or 2 names of 30 characters, 20 free texts of 24 characters, 1 text of 3,000 characters (in D-955 and D-957), etc.
- PLUs search by codes or name.
- Access to all functions of the user and technical menus from the vendor screen (possibility of programming security passwords).

■ Customization of the screens:

- › Selection of the most frequent functions in "Favourites".
- › Screen design with corporate colours and logos.
- › Allocation of independent direct keys by section and alphabetic order of the PLUs.
- › Preset keys for PLUs, sections and vendors, whereby the image, quantity and size can be configured.
- Direct uploading of images from pen drive (8 bits bmp format without RLE compression).
- Sales and management reports: sales (by article, vendor, time frames, last month, etc.), margins, balance available in the cash drawer, modified PLUs, etc.
- Export of lists to USB (total sales per employee, per payment method, per VAT rate).
- Export of receipts to USB.
- Cross selling: showing the picture of a complementary product on buyer display when selling a product.
- Fast and reliable communication between scales, with PC and mobile devices (via DWS).
- Stock management by article on the scale.
- Option to record normal price and offer price for each article.
- Warning of low level of labels in the scale, and activating light and acoustic signs.



Capacity / Accuracy

- Multirange (3,000 divisions): 6 kg / 2 g - 15 kg / 5 g.
- Optional:
 - > Monorange (3,000 divisions): 15 kg / 5 g or 30 kg / 10 g.
 - > Multirange (3,000 divisions): 15 kg / 5 g - 30 kg / 10 g.
 - > Monorange (6,000 divisions): 12 kg / 2 g or 30 kg / 5 g.

Available formats

- Flat.
- Pole.
- Double body.
- Hanging.
- Self-service.

Construction

- Highly resistant ABS plastic casing in counter format.
- Stainless steel casing in hanging formats.
- Stainless steel plate.
- Access to all non-metrological components without the need to unseal the scale.

Displays

- Vendor: Configurable 12.1" touch screen TFT in double body, hanging and self-service formats (W250 x H188 mm); and 10.4" in flat, pole and flat self-service formats (W215 x H161 mm).
- Buyer: 7" TFT (W191 x H122 mm) with adjustable inclination, or 12.1" TFT (with adjustable inclination and height). Allows showing advertising or promotional images even during the selling operation.

Printer(s)

- Models available with 1 printer for receipts, 1 printer for labels (also suitable for receipts by changing the paper roll and the working mode) or with 2 printers (for receipts and labels).
- 54 mm thermal printer.
- High resolution (8 dots/mm) and speed (100 mm/sec).
- Cassette for immediate paper roll change (in label printers).
- Optional:
 - > Linerless (in label printers).

Receipts

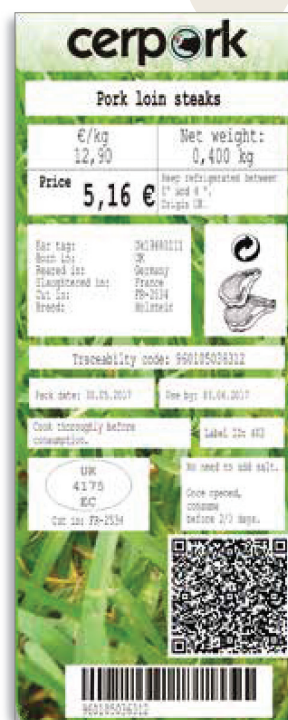
- 15 fonts (6 monospaced + 9 multispaced: more modern and legible).
- Up to 75 items.
- 2 fixed formats + 2 programmable formats.
- 4 logos.
- Barcodes: EAN-13, GS1 DataBar, EAN-128 and Code 128.



- QR codes (for example to break down the receipt).
- Name of vendor.
- 9 payment methods.
- Total in National currency and other 3 currencies.
- Discounts per line and total.
- Loyalty points.
- Customers on account.
- Recipes.

Labels

- 15 fonts (6 monospaced + 9 multispaced: more modern and legible).
- From W30 x L30 mm to W60 x L150 mm.
- 20 fixed formats + 40 programmable formats.
- 100 logos.
- Barcodes: EAN-13, GS1 DataBar, EAN-128 and Code 128.
- QR codes (with programmable information).
- 60 fields of information.
- 100 programmable texts.
- Manual and automatic pre-packing modes.
- 3 levels of totals.
- Printing of "n" identical labels.
- Printing with 90°, 180° and 270° rotation.
- Automatic adjustment of the paper detection option.
- Packaging date, expiry date and extra date (for any application).
- Alphanumeric batch number.
- 10 types of generic traceability (for meat, fish, fruits, vegetables, etc.) up to 99 products. Included in the prevailing European legislation on bovine traceability.



Food information

- Compliance with EU Regulation 1169/2011 on the provision of food information to consumers as of 13 December 2016:
 - › Minimum letter size: 1.2 mm.
 - › Effect (**bold**, underlined, or **both**) for each character in the text.
 - › Possibility of using the general text "G" (3,000 characters) for ingredients, in lower case or UPPER CASE to highlight allergens.
 - › Possibility of including a table of nutritional facts.
 - › Free texts (20 x 24 characters).
 - › For direct sale receipts and labels: possibility of indicating in the PLU name (with an * or other symbol) those that contain allergens and programming a text, such as "* Consult allergens".
 - › Possibility of printing 2 labels for each operation: programmable by PLU, configurable information, 2nd automatic or manual label (also to be used as promotional labels).

Communications

- TCP/IP Ethernet for interconnection and connection to PC.
- RS-232, for connection to scanner.
- USB.
- Optional:
 - › Wi-Fi.

Security

- Access to different protected programming menus via configurable passwords.

Interconnection

- Up to 16 scales per section.

Connectivity with other devices

- PC.
- Barcode scanner (powered by the scale – 5 VDC) to read EAN-13, GS1 DataBar, EAN-128 and Code 128 barcodes.
- Cash drawer.
- Queueing system (for hanging scales).

Software

(See section on software)

PC software:

- DFS:
 - › Programming of scales.
 - › Receipt of sales data.
 - › Data backup copy.
 - › Graphic design of receipts and labels.
 - › Design and management of advertising images for buyer display.
- RMS*:
 - › Programming and management of scales.
 - * Does not manage:
 - › Images (of articles and advertising).
 - › Specific functions of D-900 scales.
- DLD:
 - › Graphic design of receipts and labels.
- Integration tools: in Windows or Linux to facilitate communication with the Back-Office.

Scale firmware:

- DWS (Dibal Web Server):
 - › Allows access to the information on each scale (via passwords) from any computer or mobile device with an Internet browser.

Power supply

- Mains: 110 up to 230 VDC.
- Optional:
 - › Anti-blackout rechargeable internal battery 24 V and connector to external battery 24 V.